

# MYOB Exo Business

## Release Notes

2018.4

**myob**

# Contents

Introduction	1
What's New in this Release? .....	1
Installation	2
Pre-Install Requirements .....	2
Other Requirements.....	2
Installing MYOB Exo Business .....	2
Post-Installation .....	3
Logging in to Exo Business.....	3
New Features	4
Important Upgrade Notice .....	4
Updates to the Exo Business Database .....	4
Interface Updates .....	5
Filtering Shipment Searches.....	5
Enlarged Note Fields.....	5
SQL Server Details on the About Window .....	6
FX Improvements.....	6
Updates to Record Locking .....	7
Resolved Issues	8
Exo Business Core.....	8
Exo Job Costing.....	9
Known Issues	10
Appendix 1: Profile Settings	12

# Introduction

## What's New in this Release?

The 2018.4 release includes significant underlying technology updates and enhancements that are ideally “behind the scenes” to the user. These are to deliver on our strategic objective to keep Exo Business aligned with the very latest Microsoft technologies and to keep Exo Business a perfect fit for least-cost hosted and shared environment options. Not the least of these behind-the-scenes enhancements is the protection of clients’ sensitive data that may be off-premise, using the latest advanced encryption standards—this is a theme that will dominate the next releases well into 2019. Collectively, these changes will protect clients’ investment by future-proofing, and will set us up to accelerate the development of features going forward.

This release also services partner-prioritised issues and enhancements as detailed.

The purpose of this document is to provide essential information on the installation and use of this release:

- The **Installation** section provides an overview of the installation process, including pre-installation requirements and post installation steps.
- The **New Features** section describes all new features introduced in this release.
- The **Resolved Issues** section describes all issues that have been addressed by this release.
- The **Known Issues** section details any issues in this release that have been identified as requiring attention.
- The **New Profile Settings** appendix at the end of this document summarises all changes to Exo Business profile settings included in this release.

# Installation

## Pre-Install Requirements

Minimum system requirements for PCs running MYOB Exo Business components are detailed below. Full details of requirements and supported operating systems for MYOB Exo Business are available on the [Minimum System Requirements page on the Exo Business Education Centre](#).

The performance of the Exo Business system is not assured if these requirements are not met. Similarly, performance cannot be assured if the Exo Business system is installed on a server that is already under load from other processes, or a RDBMS that is not suitable for the organization's volume of data.

### Other Requirements

Certain features of MYOB Exo Business require one or more of the following:

- Internet access
- Microsoft Internet Explorer 7.0 or later
- Adobe® Acrobat Reader 7.0 or later

Microsoft Office connection requires Microsoft Word/Excel 2010 to 2016.

Contact synchronisation requires Microsoft Outlook 2010 to 2016.

MYOB Exo Business 2018.4 requires **ExonetLib.dll** version 2018.4.0 or later. Version 2018.4.0 is included with this release.

When installing manually on 64-bit operating systems, the file **RwEasyMAPI64.exe** must be copied from the **Supporting Files\RapWare** folder of the Exo Business DVD to the install directory. Register this file by running the following from a command prompt:

```
RwEasyMAPI64.exe /regserver
```

## Installing MYOB Exo Business

Information on installing and upgrading MYOB Exo Business is available on the MYOB Exo Business Education Centre—see the following pages:

- [Installing Exo Business](#)
- [Installing Exo Business Services](#)

## Post-Installation

Once MYOB Exo Business software is installed, it must be configured for use. Optionally, data can be migrated into the Exo Business system from another MYOB product. The configuration and migration processes are detailed in the *MYOB Exo Business Implementation Guide*.

### Logging in to Exo Business

New MYOB Exo Business databases are installed with one or more default user accounts. When logging in to Exo Business for the first time, you must supply the following login details.

For a new blank database (EXO\_LIVE):

- Default admin user = ExoAdmin
- Default admin password = ExoAdmin

For the demonstration database (EXO\_DEMO):

- Default admin user = ExoAdmin
- Default admin password = ExoAdmin
- Default demo user = demo
- Default demo password = DEMO

**Note:** Passwords are case-sensitive.

# New Features

## Important Upgrade Notice

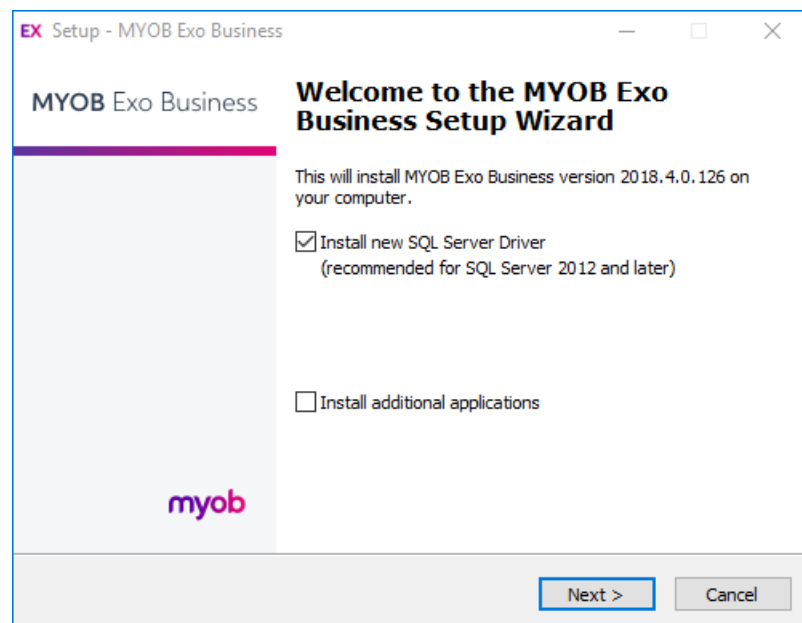
The **Exonetlib.dll** DLL has been updated in this release. When upgrading manually, make sure to install and register the upgraded DLL—its version number should be 2018.4.0 or later.

This version of **Exonetlib.dll** is not backwards compatible with previous versions. If multiple versions of Exo Business are present in your environment, the new version of **Exonetlib.dll** must be installed in a separate location from existing DLLs—running the Exo Business Client installer (**ExoClientInstall.exe**) will do this for you automatically.

## Updates to the Exo Business Database

This release includes updates to the Exo Business database to improve performance and reduce reliance on older technologies.

Exo Business now uses a new OLE DB driver (Version 18) to access SQL Server if you are using MSSQL 2012 Service Pack 4 or above. The new driver can be installed using the Exo Business Client installer (**ExoClientInstall.exe**):



Exo Business 2018.4 databases are more easily cloneable for easier deployment on hosted and virtual environments. A 2018.4 Exo Business database could be shipped as a BACPAC file using the wizard process in SQL Server.

This version removes dependence on SQL features that are not supported in some hosted environments with no loss of feature set to the users who are being migrated—key examples being the use of C# CLR Assemblies and extended column

properties; and encrypted objects such as TSXID Triggers, FN\_GET\_USER\_INFO and related stored functions.

This version includes the following additional updates to the database:

- Removal of older column data types that may be come unsupported in future SQL Server versions, as well as dependences on SQL features that are no longer formally supported and could potentially be deprecated in any future SQL server version without warning.
- Rewriting T-SQL statements that contained unsupported syntax, which could limit forward compatibility.
- Removal of the DB compatibility mode requirement as of SQL 2017 to be able to take advantage of the latest and fastest SQL features.

Exo Business will use the latest [Advanced Encryption Standards](#) database encryption methods for passwords and other sensitive data including custom user data stored in Encrypted Extra fields.

This version should work out of the box for 2017 SQL Server on windows 2016 Server without any requirement to manually enable TLS 1.1.

## Interface Updates

### Filtering Shipment Searches

When searching for a shipment on the Inwards Goods Receipt window, it is now possible to filter shipments by status:

The screenshot shows the 'EB Inwards Goods Receipt' window. It has a menu bar with 'File', 'Utilities', and 'Help'. Below the menu bar is a toolbar with buttons for 'New Shipment', 'New Receipt', 'Save', 'Save & Exit', 'Cancel', and a search icon. The main area is divided into two sections: 'Shipment no:' and 'Receipt no:'. Under 'Inwards goods shipments search', there are three radio buttons: 'Shipment no' (selected), 'Search stock code', and 'Search P/O'. Each has a corresponding text input field. To the right, under 'Status:', there is a list of checkboxes: 'ALL', 'ON BOARD', 'IN TRANSIT', and 'AWAITING CUSTOMS', all of which are checked. A 'Search' button is located to the right of the status checkboxes. Below the search area is a table with the following columns: '#', 'Depart', 'ETA', 'Carrier', 'Vessel', 'Ext Ref', 'Weight', 'Method', 'Status', and 'Includes PO'. The table is currently empty.

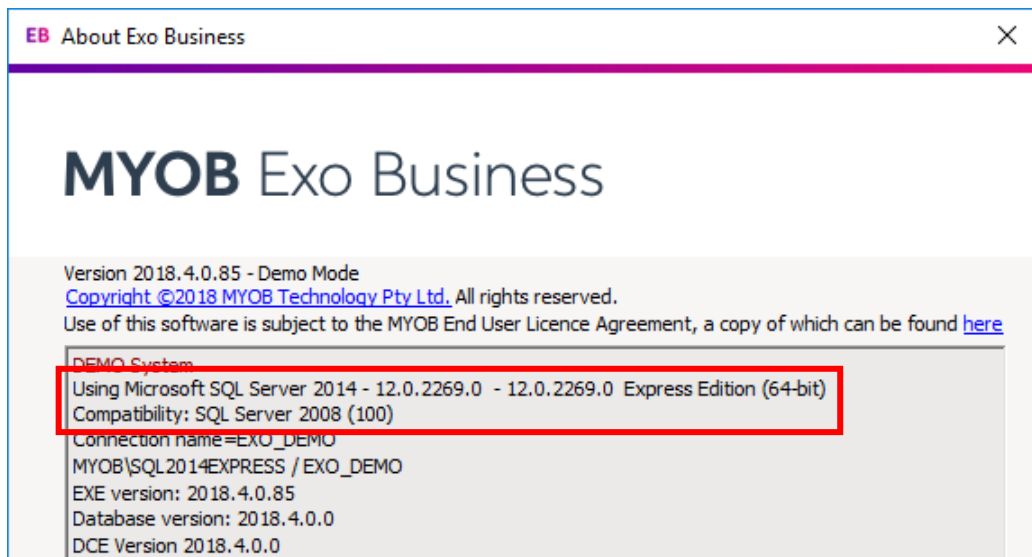
### Enlarged Note Fields

This release enlarges the freeform note entry fields on some windows:

- The **Production notes** field on the Works Orders window has been enlarged to 2048 characters, to match the size of the **Notes** field on the Bill of Materials window.
- The **Notes** field on the Opportunity window now resizes to fill the available space when the window is resized.

## SQL Server Details on the About Window

The SQL Server version and compatibility mode are now displayed on the About window:



## FX Improvements

When entering transactions into a prior period, the Creditors FX and Debtors FX rates now default to the closing rate for that period, rather than the current rate.

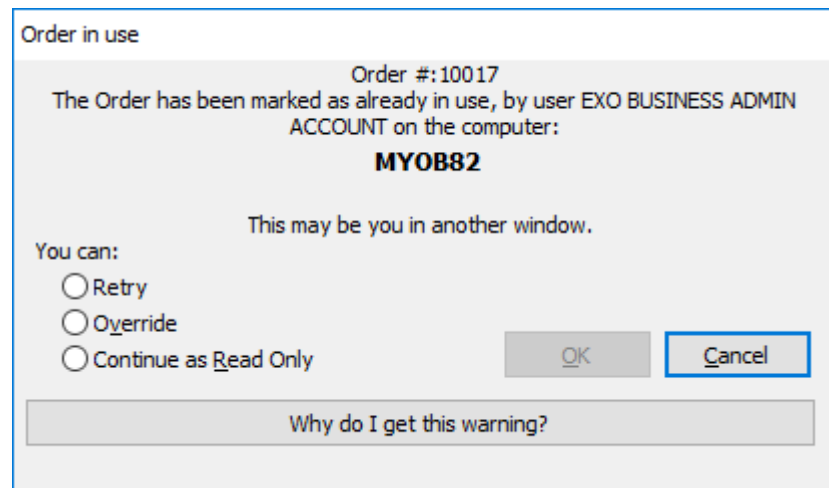


## Updates to Record Locking

The User-level profile setting **Enable override of business record locks** has been updated to allow more ways of dealing with locked records. The setting's name has been changed to **Allow user to override or view business record locks**, and where previously the setting was a check box, it is now a dropdown with the following options:

- Allow Override and Read Only (equivalent to ticking the old setting)
- Prevent Override and Allow Read Only
- Prevent Read Only and Allow Override
- Prevent Override and Read Only (equivalent to unticking the old setting)

These options affect the availability of the **Override** and **Continue as Read Only** options on the window that appears when a user tries to access a locked record:



In addition, the Sales Order window has been further locked down, so that when a locked order is opened as read-only, it is no longer possible to change or process the order in any way.

# Resolved Issues

## Exo Business Core

Service Request ID	Description
<b>11857505650</b> 11848056411 <b>110460906116</b> 19505278941	This release adds the ability to filter shipment searches by status on the Inwards Goods Receipt window—see page 5.
<b>162141628414</b> 162428010801 162190813211 161779425961 161729286811	It was not possible to allocate an unallocated credit note to an unallocated invoice of the same value. This has been resolved.
<b>160662931776</b> 160688766441 121076875091	The sort order of the Stock Location table on the Stock Item Details window was not saved when a user selected <b>Save column settings</b> from the right-click menu, and the error “Name not unique in this context” could appear when attempting to re-sort it. This has been resolved.
<b>110194530734</b> 113362604031 110158494981	When stock levels were adjusted to zero by a transaction process, e.g. during a stocktake, the levels could end up with very small residual values that could not then be removed from the database. This has been resolved; the problem no longer occurs, and on upgrade the DBUpdate process removes any historical values.
<b>160600435589</b> 160558630821	Filtering by period on the Debtor Transaction Allocations window did not work correctly. This has been resolved.
<b>160851650548</b> 160645715801	The <b>Subject</b> field on the Activity window let users enter more text than the associated database field could hold, which meant that data could be truncated when the activity was saved. This has been resolved; the length of the field now corresponds to the length of the TASKS.SUBJECT database field.
<b>160786878595</b> 160784764086	On the Creditor Invoice Entry window in GL mode, if the user entered text into the <b>Code</b> column and pressed Tab, the General Ledger Account Search window appeared but didn't search by the text in the Code column. This has been resolved.
<b>149982439024</b> 149452793461	Bank Feeds bank reconciliations could go out of balance, due to duplicate entries being med in the BANKFEEDS_TRANSACTION_LINK table.
<b>161646641156</b> 161122885871	Extra Fields could be incorrectly positioned or aligned following an upgrade to Exo Business 2018.3. This has been resolved.
<b>155168307723</b> 154791795751	The Copy Order function on Sales Orders generated an error message if an Extra Field has been set up on Sales Orders to update the value of the ORDSTATUS field. This has been resolved.
-	The system did not use the <b>Maximum search results</b> profile setting when searching for stock items from within a transaction, which meant that searches could be very slow if the search was returning a large number of records. This has been resolved.

## Resolved Issues

-	When using the <b>Select visible columns</b> right-click option on the Inwards Goods Receipt window, two <b>Method</b> columns were available. This has been resolved; the columns are now named <b>Method</b> and <b>Method No</b> to make it clear what each column contains.
-	The maximum number of Tax Rates was set to 99, which meant that rates with a three-digit SEQNO were not available for selection. This has been addressed; the maximum number of rates has been increased to 199.
-	The <b>Copy to Clipboard</b> and <b>Print</b> right-click options were not available on the Analysis tab of the Creditor Account Details window. This has been resolved.
-	When a stock item with a pack quantity greater than one was added to a Purchase Order, the <b>Sub Total</b> , <b>GST Total</b> and <b>Order Total</b> fields at the bottom right of the window were not updated until the user moved to another line or saved. This has been resolved.
-	The <b>Chq/Ref</b> field on Debtor Receipts allowed 20 characters, but the corresponding fields in other transactions generated from the receipt were shorter, which could result in the data being truncated. This has been resolved.
-	A negative stock quantity error could incorrectly appear when processing a creditors credit note through Inwards Goods. This has been resolved.

## Exo Job Costing

Service Request ID	Description
<b>113146235767</b> 152168685981 148199082522 127435047011 123764072061 121429608576 112475137281 <b>119094886599</b> 118538431621 <b>144102056008</b> 143782843201	The error "Invalid column name 'SU_UNITNAME'" could appear when saving changes to a job with one or more serviceable units assigned. This has been resolved.
<b>159892087543</b> 159885929977	The <b>Split Line</b> right-click option was not available for lines on the Quote/Budget tab. This has been resolved.
<b>159552891030</b> 159298280941	If a user created multiple jobs without closing the Job Management window, the delivery address from the first job could be copied to the second. This has been resolved.
-	If a Purchase Order was generated from a job quote, and then new lines were added to the order or the job code was removed from the existing lines, the location for the lines remained as the WIP location. This has been resolved; if a line has no job code, its location is set to the default stock location. If a line has a job, the line location is set to the WIP location.

# Known Issues

The following issues have been identified as requiring end-user attention in this release.

## Installation/Upgrade Issues

- If you are using the MYOB Exo Business Installation Wizard to install an instance of SQL Express, the following must be present on the PC:
  - .NET Framework 3.5 SP1 – you can download this from: <http://go.microsoft.com/fwlink/?LinkId=120550>
  - Windows Installer 4.5 – you can download this from: <http://go.microsoft.com/fwlink/?LinkId=123422>
  - Windows PowerShell 1.0 – you can download this from: <http://go.microsoft.com/fwlink/?LinkId=120552>
- Due to security settings imposed by Windows, CHM Help files cannot be viewed from a remote location—this means that you can only view the Exo Business CHM Help files if they have been installed on the local PC. See [Microsoft Knowledge Base article 892675](#) for more information on this issue and suggested workarounds. (This issue does not apply if you are viewing online Help files on the Exo Business Education Centre.)

## Demo Data Issues

The stored procedure SP\_DEMO\_DATA\_DATE\_UPDATER, which updates the data in demo databases to the current date, was updated in Exo Business 8.4. This stored procedure is only available in the EXO\_DEMO database, which means that any existing demonstration databases used by partners will not be able roll their demo data forward; these databases will need to be re-created based on the updated EXO\_DEMO database in order to use the updated SP\_DEMO\_DATA\_DATE\_UPDATER procedure.

## Job Costing Resource Issues

When a resource allocation is created, an Activity for the relevant staff member is automatically created in the Exo Business system; however, if the resource is not associated with a staff member, the Activity will not appear on the Activity Search widget on the Task Scheduler tab.

As a workaround, a dummy staff account can be created to associate non-staff Resources with.

## Emailing from the Print Preview window

When sending a report by email from the Print Preview window, the system does not determine the email address related to the document being emailed (e.g. the relevant Creditor's email address for Creditor documents). The email address is left blank—you must enter the address manually.

### SQL Server 2012 Issues

All versions of SQL server 2012 exhibited a subtle, but now well-known change in default behaviour with regard to identity or auto number sequences. In MYOB Exo Business, this would be experienced as an unexpected anomaly where number sequences could apparently spontaneously jump by increments of 1000 if the SQL server was restarted.

This behaviour was reversed in SQL server 2014, but no known solution exists for completely preventing this behaviour in any versions of SQL server 2012, other than to upgrade to SQL server 2014 to completely eliminate the potential for this issue to occur.

### SQL Server 2008 R2 prior to SP3

MYOB Exo Business uses a SQL Server feature called Common Language Runtime Integration. This feature was disabled by default in versions of SQL Server 2008 R2 prior to Service Pack 3. If this feature is not enabled, users may encounter the following error during the upgrade process:

Updating server configuration: 'clr enabled'

# Appendix 1: Profile Settings

The following profile settings have been added or modified in this release.

Name	Profile Name	Level	Description	Default	Refer
Allow user to override or view business record locks	OBJECT_LOCK_OVERRIDE	User	This existing setting (previously named "Enable override of business record locks") has been updated to provide more options for dealing with locked records.	Allow Override and Read Only	page 7